

Pfannenberg
ELECTRO-TECHNOLOGY FOR INDUSTRY



NOW
C-UL
LISTED US

FULL

FILTERFAN 4.0™
Trust in the Original

FILTERFAN 4.0™

Otto Pfannenbergs invention of the Filterfan® in 1958 was a milestone in the area of industrial thermal management. Today Pfannenbergs provides a wide range of different solutions for industrial thermal management and is thus one of the few specialists that can provide the appropriate devices for virtually all industrial requirements – worldwide.

THE CALCULATION THAT MAKES SENSE!

As a result of over 50 years of experience and continuous development, Pfannenbergs Filterfans® have superior features. With our flow optimized fins and rotor blades the Filterfan 4.0™ reaches a particularly high airflow and at the same time provide an IP 55, Type 12 system of protection. The flat-profile, uni-colored design matches modern machines and plants perfectly.

Pfannenbergs patented click mechanism on our Filterfans 4.0™ have a unique patented 4-corner fastening system enabling safe and quick, tool-free installation allowing the filter medium to be replaced in seconds. All in all, our Filterfans 4.0™ contain 11 well-thought out patent protected features.

The fluted filter mats folded structure provides an unrivalled airflow guaranteeing Type 12 protection, while also extending the filters lifetime 300% longer than conventional filter media.

- + Low energy consumption
- + Unrivalled airflow
- + Up to 300% longer life time

- = Safe and economical cooling of your electrical enclosures

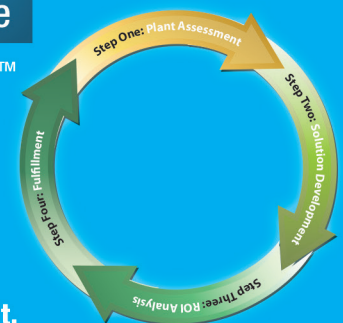
Reduce Downtime, Energy Costs and Maintenance

WHAT IS The Pfannenbergs **ADVANTAGE**™

The Pfannenbergs Advantage™ follows a results-driven, four-step process that begins and ends with the user.

It's a value proposition which provides solutions to problems encountered by the automation user (plant) that are associated with thermal management products. It allows Pfannenbergs to take the experience gained in supplying these products to the machine builder and extend it to the point of use where it can be applied to meet specific challenges, and/or to take advantage of specific opportunities.

Visit www.pfadvantage.com to learn more about **reducing TCO by managing process heat.**





The flow characteristics of the Filterfans 4.0™ were optimized during more than 1,000 tests in our modern test laboratory. The result: modern louvers which enable maximal airflow, hold back dust and water particles, protect the filter medium from damage and can be integrated into the design of the applications.

NEMA Type 12 Protection

The closed frame design prevents unfiltered air from penetrating the cabinet.

Highest Quality Fans

German manufactured fans that exceed industry standards for quality, performance and service life.

Highest System Airflow Compared to Competitors Filter Fans.

The design of the louvers supports the greatest airflow while further protecting against airborne dust and dirt.

Patented Tool-Less 4 Corner Fastening System

The patented fastening system allows for fast installation (possible to install in seconds) and easy removal reducing MTTR.

Aesthetically Pleasing Design Using Neutral Colors

Available in a standard RAL 7035 Grey and an optional Black color. These units blend in well with the modern styles and colors used for existing machines and systems.

300% Longer Service Time via Patented Fluted Filter Mat

A larger surface area on the filter mat allows for a high filtration level, greater service life and maximum airflow. Saving time and money.



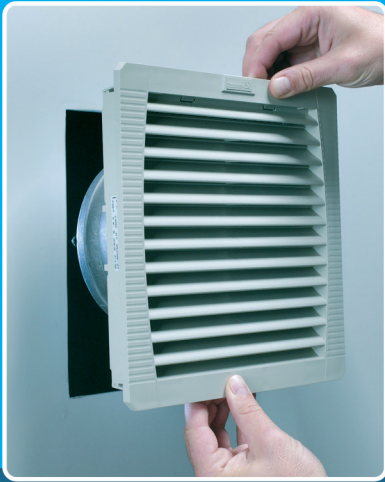
Globally Compatible

ERP compliant to meet European efficiency directives. Units also comply with additional national and international standards, e.g. TÜV, NEMA, UL, CSA and EAC.

Versatile Options

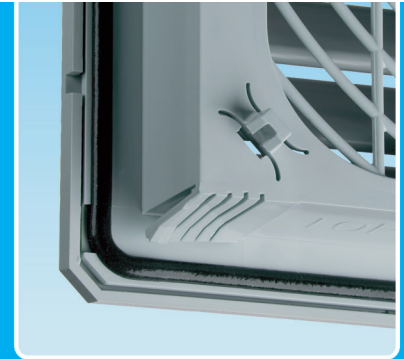
Options including UV Protected Plastic for use in direct sunlight, EMC shielding to attenuate RF signals and exhausting fans for custom applications.

Filterfans 4.0™ comply with national and international standards, e.g. TÜV, NEMA and UL.



SETS INDUSTRY STANDARD

Filterfans 4.0™ can be seamlessly integrated into industry standard enclosure cut-outs.



REDUCED INSTALLATION COSTS

The patented 4-corner fastening system allows a tool-free installation in seconds and guarantees a secure hold.

PERFORMANCE, INSTALLATION & MAINTENANCE YOUR ADVANTAGE

Complex engineered designs to optimize your bottom line.

EASY MAINTENANCE

The design cover's fastening system with grill supporting hinge requires only a single hand to replace the filter mat in seconds.



EXTENDED LIFETIME

With our fluted filter mats, Filterfans 4.0™ reach NEMA Type 12 protection. Additionally, the fluted mats extend service life by 300% requiring less frequent replacements.



OPTIMIZED AIR FLOW

Airflow optimized fins and rotor blades guarantee maximal airflow with minimal energy consumption using high performance louvers and more surface area on fluted filter mats.

NEMA TYPE 3R/4/4X FILTERFAN®

RAINHOODS

Pfannenberg Rainhoods (Patent Pending) feature a robust design rated to NEMA TYPE 3R/4/4x and IPx6 when used with Pfannenberg Filterfans®. Options include painted galvanized steel, stainless steel and FDA compliant food and beverage grade versions.

Caution: De-energize system before washdown. Rainhoods will not prevent hazardous gases or humidity from entering the cabinet.

**PATENT
PENDING**



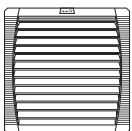
**NEMA Type 3R,
4, 4X Rated /
IPx6 Rating**

SANITARY RAINHOOD

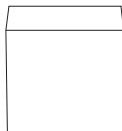
In addition to our standard painted and stainless steel designs, Pfannenberg also offers a specialty 4X stainless steel rainhood to meet the FDA compatible requirements found in Food & Beverage Manufacturing Facilities.



INDUSTRY'S FIRST UL LISTED RAINHOOD SOLUTION



+



=



**ENVIROMENTALLY RATED
ENCLOSURE ACCESSORY
SOLUTION**

Based on FTTA.E489500



ADDITIONAL ACCESSORIES

Filterfans 4.0™ can be used with thermostats to reduce energy & maintenance costs. NEMA 3R rainhoods are also available in steel and stainless steel for outdoor and some wash down applications.

FILTERFANS®



PF 11000

- Airflow rate up to 17 CFM
- System of protection IP 54, NEMA type 12
- Cut-out dimensions: 92 x 92 mm



Available voltage ± 10%	115 V, 230 V, 24 VDC
Design (housing and protection against accidental contact)	made of injection-moulded thermo-plastic, self-extinguishing, UL 94 VO
Service life L ₁₀ (+ 40 °C)	52,500 h
Weight	1.2 lb
Color	RAL 7035 (Lt. Gray) RAL 9011 (Blk)
Noise level (EN ISO 3741)	33 dB (A)
Type of connection	2-core, length 310 mm
Bearing type	sleeve bearing
Approvals	UL, cUL, CE, EAC
Power consumption	11 W
Width x height x depth	4.29 x 4.29 x 2.44 in

System of protection (EN 60529)	IP 54
System of protection (UL 50)	NEMA Type 12 - standard filter
Filter mat quality class	G 3
Unimpeded airflow	17 CFM
Airflow rate in combination (PF + PFA 10.000)	11 CFM
Filtration efficiency	88%
Part no. *	11611151055 (115 V, Lt. Gray)
Part no. *	11611151050 (115 V, Black)
Part no. Spare part filter mats (5 pieces)	18611600029
Part no. NEMA Type 3R/4 Rainhood * NEMA Type 4x	18182000010 (Lt. Gray) 18182000011 (SS)

PF 22000

- Airflow rate up to 38 CFM
- System of protection IP 55, NEMA type 12
- Cut-out dimensions: 125 x 125 mm



Available voltage ± 10%	115 V, 230 V, 24 VDC
Design (housing and protection against accidental contact)	made of injection-moulded thermo-plastic, self-extinguishing, UL 94 VO
Service life L ₁₀ (+ 40 °C)	40,000 h
Weight	1.5 lb
Color	RAL 7035 (Lt. Gray) RAL 9011 (Blk)
Noise level (EN ISO 3741)	44 dB (A)
Type of connection	terminal strip
Bearing type	sleeve bearing
Approvals	UL, cUL, CE, EAC
Power consumption	20 W
Width x height x depth	5.71 x 5.71 x 2.76 in

System of protection (EN 60529)	IP 55
System of protection (UL 50)	NEMA Type 12 - fluted filter
Filter mat quality class	G 4
Unimpeded airflow	38 CFM
Airflow rate in combination (PF + PFA 20.000)	28 CFM
Filtration efficiency	91%
Part no. *	11622154055 (115 V, Lt. Gray)
Part no. *	11622154050 (115 V, Black)
Part no. Spare part filter mats (5 pieces)	18611600034
Part no. NEMA Type 3R/4 Rainhood * NEMA Type 4x	18182000010 (Lt. Gray) 18182000011 (SS)

PF 32000

- Airflow rate up to 65 CFM
- System of protection IP 55, NEMA type 12
- Cut-out dimensions: 177 x 177 mm



Available voltage ± 10%	115 V, 230 V, 24 VDC
Design (housing and protection against accidental contact)	made of injection-moulded thermo-plastic, self-extinguishing, UL 94 VO
Service life L ₁₀ (+ 40 °C)	40,000 h
Weight	1.9 lb
Color	RAL 7035 (Lt. Gray) RAL 9011 (Blk)
Noise level (EN ISO 3741)	40 dB (A)
Type of connection	terminal strip
Bearing type	sleeve bearing
Approvals	UL, cUL, CE, EAC
Power consumption	20 W
Width x height x depth	7.95 x 7.95 x 3.66 in

System of protection (EN 60529)	IP 55
System of protection (UL 50)	NEMA Type 12 - fluted filter
Filter mat quality class	G 4
Unimpeded airflow	65 CFM
Airflow rate in combination (PF + PFA 30.000)	38 CFM
Filtration efficiency	91%
Part no. *	11632154055 (115 V, Lt. Gray)
Part no. *	11632154050 (115 V, Black)
Part no. Spare part filter mats (5 pieces)	18611600035
Part no. NEMA Type 3R/4 Rainhood * NEMA Type 4x	18182000013 (Lt. Gray) 18182000014 (SS)

*Consult factory for additional options

FILTERFANS®



PF 42500

- Airflow rate up to 94 CFM
- System of protection IP 55, NEMA type 12
- Cut-out dimensions: 223 x 223 mm



Available voltage ± 10%	115 V, 230 V, 24 VDC
Design (housing and protection against accidental contact)	made of injection-moulded thermo-plastic, self-extinguishing, UL 94 VO
Service life L ₁₀ (+ 40 °C)	42,500 h
Weight	2.6 lb
Color	RAL 7035 (Lt. Gray) RAL 9011 (Blk)
Noise level (EN ISO 3741)	43 dB (A)
Type of connection	spring-type terminal
Bearing type	ball bearing
Approvals	UL, cUL, CE, EAC
Power consumption	17 W
Width x height x depth	9.92 x 9.92 x 4.05 in

System of protection (EN 60529)	IP 55
System of protection (UL 50)	NEMA Type 12 - fluted filter
Filter mat quality class	G 4
Unimpeded airflow	94 CFM
Airflow rate in combination (PF + PFA 40.000)	67 CFM
Filtration efficiency	91%
Part no. *	11642154055 (115 V, Lt. Gray)
Part no. *	11642154050 (115 V, Black)
Part no. Spare part filter mats (5 pieces)	18611600036
Part no. NEMA Type 3R/4 Rainhood * NEMA Type 4x	18182000016 (Lt. Gray) 18182000017 (SS)

PF 43000

- Airflow rate up to 155 CFM
- System of protection IP 55, NEMA type 12
- Cut-out dimensions: 223 x 223 mm



Available voltage ± 10%	115 V, 230 V, 24 VDC
Design (housing and protection against accidental contact)	made of injection-moulded thermo-plastic, self-extinguishing, UL 94 VO
Service life L ₁₀ (+ 40 °C)	40,000 h
Weight	3.68 lb
Color	RAL 7035 (Lt. Gray) RAL 9011 (Blk)
Noise level (EN ISO 3741)	46 dB (A)
Type of connection	spring-type terminal
Bearing type	ball bearing
Approvals	UL, cUL, CE, EAC
Power consumption	40 W
Width x height x depth	9.92 x 9.92 x 4.69 in

System of protection (EN 60529)	IP 55
System of protection (UL 50)	NEMA Type 12 - fluted filter
Filter mat quality class	G 4
Unimpeded airflow	155 CFM
Airflow rate in combination (PF + PFA 40.000)	122 CFM
Filtration efficiency	91%
Part no. *	11643154055 (115 V, Lt. Gray)
Part no. *	11643154050 (115 V, Black)
Part no. Spare part filter mats (5 pieces)	18611600036
Part no. NEMA Type 3R/4 Rainhood * NEMA Type 4x	18182000016 (Lt. Gray) 18182000017 (SS)

PF 65000

- Airflow rate up to 297 CFM
- System of protection IP 55, NEMA type 12
- Cut-out dimensions: 291 x 291 mm



Available voltage ± 10%	115 V, 230 V
Design (housing and protection against accidental contact)	made of injection-moulded thermo-plastic, self-extinguishing, UL 94 VO
Service life L ₁₀ (+ 40 °C)	40,000 h
Weight	7 lb
Color	RAL 7035 (Lt. Gray) RAL 9011 (Blk)
Noise level (EN ISO 3741)	52 dB (A)
Type of connection	spring-type terminal
Bearing type	ball bearing
Approvals	UL, cUL, CE, EAC
Power consumption	90 W
Width x height x depth	12.6 x 12.6 x 6.18 in

System of protection (EN 60529)	IP 55
System of protection (UL 50)	NEMA Type 12 - fluted filter
Filter mat quality class	G 4
Unimpeded airflow	297 CFM
Airflow rate in combination (PF + PFA 60.000)	224 CFM
Filtration efficiency	91%
Part no. *	11665154055 (115 V, Lt. Gray)
Part no. *	11665154050 (115 V, Black)
Part no. Spare part filter mats (5 pieces)	18611600037
Part no. NEMA Type 3R/4 Rainhood * NEMA Type 4x	18182000019 (Lt. Gray) 18182000020 (SS)

*Consult factory for additional options

FILTERFANS®



PF 66000

- Airflow rate up to 462 CFM
- System of protection IP 55, NEMA type 12
- Cut-out dimensions: 291 x 291 mm



Available voltage ± 10%	115 V, 230 V, 460 V
Design (housing and protection against accidental contact)	made of injection-moulded thermo-plastic, self-extinguishing, UL 94 VO
Service life L ₁₀ (+ 40 °C)	40,000 h
Weight	7 lb
Color	RAL 7035 (Lt. Gray) RAL 9011 (Blk)
Noise level (EN ISO 3741)	64 dB (A)
Type of connection	spring-type terminal
Bearing type	ball bearing
Approvals	UL, cUL, CE, EAC
Power consumption	160 W
Width x height x depth	12.6 x 12.6 x 6.18 in

System of protection (EN 60529)	IP 55
System of protection (UL 50)	NEMA type 12 - fluted filter
Filter mat quality class	G 4
Unimpeded airflow	462 CFM
Airflow rate in combination (PF + PFA 60.000)	295 CFM
Filtration efficiency	91%
Part no. *	11666154055 (115 V, Lt. Gray)
Part no. *	11666154050 (115 V, Black)
Part no. Spare part filter mats (5 pieces)	18611600037
Part no. NEMA Type 3R/4 Rainhood * NEMA Type 4x	18182000019 (Lt. Gray) 18182000020 (SS)

PF 67000

- Airflow rate up to 560 CFM
- System of protection IP 55, NEMA type 12
- Cut-out dimensions: 291 x 291 mm



Available voltage ± 10%	115 V, 230 V, 460 V
Design (housing and protection against accidental contact)	made of injection-moulded thermo-plastic, self-extinguishing, UL 94 VO
Service life L ₁₀ (+ 40 °C)	40,000 h
Weight	8.16 lb
Color	RAL 7035 (Lt. Gray) RAL 9011 (Blk)
Noise level (EN ISO 3741)	66 / 69 dB (A)
Type of connection	spring-type terminal
Bearing type	ball bearing
Approvals	UL, cUL, CE, EAC
Power consumption	195 W
Width x height x depth	12.6 x 12.6 x 6.18 in

System of protection (EN 60529)	IP 55
System of protection (UL 50)	NEMA type 12 - fluted filter
Filter mat quality class	G 4
Unimpeded airflow	560 CFM
Airflow rate in combination (PF + PFA 60.000)	368 CFM
Filtration efficiency	91%
Part no. *	11667154055 (115 V, Lt. Gray)
Part no. *	11667154050 (115 V, Black)
Part no. Spare part filter mats (5 pieces)	18611600037
Part no. NEMA Type 3R/4 Rainhood * NEMA Type 4x	18182000019 (Lt. Gray) 18182000020 (SS)

EXHAUST FILTERS

PFA 10000

- Snap fastener without screws
- Simple filter mat exchange
- With integrated foam seal to enclosure
- W x H x D: 4.29 x 4.29 x .90 in
- Cut-out dimensions: 92 x 92 mm
- Color: RAL 7035 (Lt. Gray)
RAL 9011 (Blk)



Design (housing and protection against accidental contact)	made of injection-moulded thermoplastic, self-extinguishing, UL 94 VO
Approvals	UL, cUL, CE, EAC
Version	IP 54
System of protection (EN 60529 / UL 50)	NEMA type 12 - standard filter
Filter mat quality class	G 3
Part no. *	11710001055 (Lt. Gray)
Part no. *	11710001050 (Black)
Part no. Spare filter mats (5 pieces)	18611600029
Part no. NEMA Type 3R/4 Rainhood * NEMA Type 4x	18182000010 (Lt. Gray) 18182000011 (SS)

*Consult factory for additional options

EXHAUST FILTERS

PFA 20000

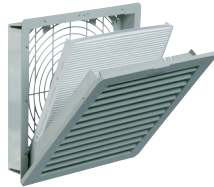
- Snap fastener without screws
- Simple filter mat exchange
- With integrated foam seal to enclosure
- W x H x D: 5.71 x 5.71 x 1.22 in
- Cut-out dimensions: 125 x 125 mm
- Color: RAL 7035 (Lt. Gray)
RAL 9011 (Blk)



Design (housing and protection against accidental contact)	made of injection-moulded thermoplastic, self-extinguishing, UL 94 VO
Approvals	UL, cUL, CE, EAC
System of protection (EN 60529 / UL 50)	NEMA type 12 - fluted filter
Filter mat quality class	G 4
Part no. *	11720004055 (Lt. Gray)
Part no. *	11720004050 (Black)
Part no. Spare filter mats (5 pieces)	18611600034
Part no. NEMA Type 3R/4	18182000010 (Lt. Gray)
Rainhood * NEMA Type 4x	18182000011 (SS)

PFA 30000

- Snap fastener without screws
- Simple filter mat exchange
- With integrated foam seal to enclosure
- W x H x D: 7.95 x 7.95 x 1.57 in
- Cut-out dimensions: 177 x 177 mm
- Color: RAL 7035 (Lt. Gray)
RAL 9011 (Blk)



Design (housing and protection against accidental contact)	made of injection-moulded thermoplastic, self-extinguishing, UL 94 VO
Approvals	UL, cUL, CE, EAC
System of protection (EN 60529 / UL 50)	NEMA type 12 - fluted filter
Filter mat quality class	G 4
Part no. *	11730004055 (Lt. Gray)
Part no. *	11730004050 (Black)
Part no. Spare filter mats (5 pieces)	18611600035
Part no. NEMA Type 3R/4	18182000013 (Lt. Gray)
Rainhood * NEMA Type 4x	18182000014 (SS)

PFA 40000

- Snap fastener without screws
- Simple filter mat exchange
- With integrated foam seal to enclosure
- W x H x D: 9.92 x 9.92 x 1.65 in
- Cut-out dimensions: 223 x 223 mm
- Color: RAL 7035 (Lt. Gray)
RAL 9011 (Blk)



Design (housing and protection against accidental contact)	made of injection-moulded thermoplastic, self-extinguishing, UL 94 VO
Approvals	UL, cUL, CE, EAC
System of protection (EN 60529 / UL 50)	NEMA type 12 - fluted filter
Filter mat quality class	G 4
Part no. *	11740004055 (Lt. Gray)
Part no. *	11740004050 (Black)
Part no. Spare filter mats (5 pieces)	18611600036
Part no. NEMA Type 3R/4	18182000016 (Lt. Gray)
Rainhood * NEMA Type 4x	18182000017 (SS)

PFA 60000

- Snap fastener without screws
- Simple filter mat exchange
- With integrated foam seal to enclosure
- W x H x D: 12.6 x 12.6 x 1.8 in
- Cut-out dimensions: 291 x 291 mm
- Color: RAL 7035 (Lt. Gray)
RAL 9011 (Blk)



Design (housing and protection against accidental contact)	made of injection-moulded thermoplastic, self-extinguishing, UL 94 VO
Approvals	UL, cUL, CE, EAC
System of protection (EN 60529 / UL 50)	NEMA type 12 - fluted filter
Filter mat quality class	G 4
Part no. *	11760004055 (Lt. Gray)
Part no. *	11760004050 (Black)
Part no. Spare filter mats (5 pieces)	18611600037
Part no. NEMA Type 3R/4	18182000019 (Lt. Gray)
Rainhood * NEMA Type 4x	18182000020 (SS)

*Consult factory for additional options

FILTERFANS®



PF 11000 EMC

- Airflow rate up to 17 CFM
- System of protection IP 54, NEMA type 12
- Cut-out dimensions: 93 x 93 mm



Available voltage ± 10%	115 V, 230 V, 24 VDC
Design (housing and protection against accidental contact)	made of injection-moulded thermo-plastic, self-extinguishing, UL 94 VO
EMC screen	stainless steel
Service life L ₁₀ (+ 40 °C)	55,000 h
Weight / Color	1.21 lb / RAL 7035 (Lt. Gray) RAL 9011 (Blk)
Noise level (EN ISO 3741)	33 dB (A)
Type of connection	2-core, length 310 mm
Bearing type	sleeve bearing
Approvals	UL, cUL, CE, EAC
Power consumption	11 W
Width x height x depth	4.29 x 4.29 x 2.44 in

Version	IP 54
System of protection (EN 60529 / UL 50)	NEMA type 12 - standard filter
Filter mat quality class	G 3
Unimpeded airflow	17 CFM
Airflow rate in combination (PF + PFA 10.000)	11 CFM
Filtration efficiency	88%
Part no. *	11811151055 (115 V, Lt. Gray)
Part no. Spare part filter mats (5 pieces)	18611600029
Part no. NEMA Type 3R/4 Rainhood * NEMA Type 4x	18182000010 (Lt. Gray) 18182000011 (SS)

PF 22000 EMC

- Airflow rate up to 38 CFM
- System of protection IP 55, NEMA type 12
- Cut-out dimensions: 126 x 126 mm



Available voltage ± 10%	115 V, 230 V, 24 VDC
Design (housing and protection against accidental contact)	made of injection-moulded thermo-plastic, self-extinguishing, UL 94 VO
EMC screen	stainless steel
Service life L ₁₀ (+ 40 °C)	40,000 h
Weight / Color	1.5 lb / RAL 7035 (Lt. Gray) RAL 9011 (Blk)
Noise level (EN ISO 3741)	44 dB (A)
Type of connection	terminal strip
Bearing type	sleeve bearing
Approvals	UL, cUL, CE, EAC
Power consumption	18 W
Width x height x depth	5.71 x 5.71 x 2.76 in

System of protection (EN 60529)	IP 55
System of protection (UL 50)	NEMA type 12 - fluted filter
Filter mat quality class	G 4
Unimpeded airflow	38 CFM
Airflow rate in combination (PF + PFA 20.000)	28 CFM
Filtration efficiency	91%
Part no. *	11822153055 (115 V, Lt. Gray)
Part no. Spare part filter mats (5 pieces)	18611600034
Part no. NEMA Type 3R/4 Rainhood * NEMA Type 4x	18182000010 (Lt. Gray) 18182000011 (SS)

PF 32000 EMC

- Airflow rate up to 65 CFM
- System of protection IP 55, NEMA type 12
- Cut-out dimensions: 178 x 178 mm



Available voltage ± 10%	115 V, 230 V, 24 VDC
Design (housing and protection against accidental contact)	made of injection-moulded thermo-plastic, self-extinguishing, UL 94 VO
EMC screen	stainless steel
Service life L ₁₀ (+ 40 °C)	40,000 h
Weight / Color	2.12 lb / RAL 7035 (Lt. Gray) RAL 9011 (Blk)
Noise level (EN ISO 3741)	40 dB (A)
Type of connection	spring-type terminal
Bearing type	ball bearing
Approvals	UL, cUL, CE, EAC
Power consumption	20 W
Width x height x depth	7.95 x 7.95 x 3.66 in

System of protection (EN 60529)	IP 55
System of protection (UL 50)	NEMA type 12 - fluted filter
Filter mat quality class	G 4
Unimpeded airflow	65 CFM
Airflow rate in combination (PF + PFA 30.000)	38 CFM
Filtration efficiency	91%
Part no. *	11832153055 (115 V, Lt. Gray)
Part no. Spare part filter mats (5 pieces)	18611600035
Part no. NEMA Type 3R/4 Rainhood * NEMA Type 4x	18182000013 (Lt. Gray) 18182000014 (SS)

*Consult factory for additional options

FILTERFANS®



PF 42500 EMC

- Airflow rate up to 95 CFM
- System of protection IP 55 NEMA type 12
- Cut-out dimensions: 224 x 224 mm



Available voltage ± 10%	115 V, 230 V, 24 VDC
Design (housing and protection against accidental contact)	made of injection-moulded thermo-plastic, self-extinguishing, UL 94 VO
EMC screen	stainless steel
Service life L ₁₀ (+ 40 °C)	42,500 h
Weight / Color	2.6 lb / RAL 7035 (Lt. Gray) RAL 9011 (Blk)
Noise level (EN ISO 3741)	43 dB (A)
Type of connection	spring-type terminal
Bearing type	ball bearing
Approvals	UL, cUL, CE, EAC
Power consumption	17 W
Width x height x depth	9.92 x 9.92 x 4.05 in

System of protection (EN 60529)	IP 55
System of protection (UL 50)	NEMA type 12 - fluted filter
Filter mat quality class	G 4
Unimpeded airflow	94 CFM
Airflow rate in combination (PF + PFA 40.000)	67 CFM
Filtration efficiency	91%
Part no. *	11842153055 (115 V, Lt. Gray)
Part no. Spare part filter mats (5 pieces)	18611600036
Part no. NEMA Type 3R/4 Rainhood * NEMA Type 4x	18182000016 (Lt. Gray) 18182000017 (SS)

PF 43000 EMC

- Airflow rate up to 155 CFM
- System of protection IP 55 NEMA type 12
- Cut-out dimensions: 224 x 224 mm



Available voltage ± 10%	115 V, 230 V, 24 VDC
Design (housing and protection against accidental contact)	made of injection-moulded thermo-plastic, self-extinguishing, UL 94 VO
EMC screen	stainless steel
Service life L ₁₀ (+ 40 °C)	40,000 h
Weight / Color	4.03 lb / RAL 7035 (Lt. Gray) RAL 9011 (Blk)
Noise level (EN ISO 3741)	46 dB (A)
Type of connection	spring-type terminal
Bearing type	ball bearing
Approvals	UL, cUL, CE, EAC
Power consumption	40 W
Width x height x depth	9.92 x 9.92 x 4.69 in

System of protection (EN 60529)	IP 55
System of protection (UL 50)	NEMA type 12 - fluted filter
Filter mat quality class	G 4
Unimpeded airflow	155 CFM
Airflow rate in combination (PF + PFA 40.000)	122 CFM
Filtration efficiency	91%
Part no.	11843153055 (115 V, Lt. Gray)
Part no. Spare part filter mats (5 pieces)	18611600036
Part no. NEMA Type 3R/4 Rainhood * NEMA Type 4x	18182000016 (Lt. Gray) 18182000020 (SS)

PF 65000 EMC

- Airflow rate up to 297 CFM
- System of protection IP 55 NEMA type 12
- Cut-out dimensions: 292 x 292 mm



Available voltage ± 10%	115 V 50 / 60 Hz
Design (housing and protection against accidental contact)	made of injection-moulded thermo-plastic, self-extinguishing, UL 94 VO
EMC screen	stainless steel
Service life L ₁₀ (+ 40 °C)	40,000 h
Weight / Color	7.56 lb / RAL 7035 (Lt. Gray) RAL 9011 (Blk)
Noise level (EN ISO 3741)	54 / 52 dB (A)
Type of connection	spring-type terminal
Bearing type	ball bearing
Approvals	UL, cUL, CE, EAC
Power consumption	90 W
Width x height x depth	12.6 x 12.6 x 6.18 in

System of protection (EN 60529)	IP 55
System of protection (UL 50)	NEMA type 12 - fluted filter
Filter mat quality class	G 4
Unimpeded airflow	297 CFM
Airflow rate in combination (PF + PFA 60.000)	224 CFM
Filtration efficiency	91%
Part no. *	11865153055 (115 V, Lt. Gray)
Part no. Spare part filter mats (5 pieces)	18611600037
Part no. NEMA Type 3R/4 Rainhood * NEMA Type 4x	18182000019 (Lt. Gray) 18182000020 (SS)

*Consult factory for additional options

FILTERFANS®



PF 66000 EMC

- Airflow rate up to 462 CFM
- System of protection IP 55 NEMA type 12
- Cut-out dimensions: 292 x 292 mm



Rated voltage ± 10%	115 V, 230 V, 24 VDC
Design (housing and protection against accidental contact)	made of injection-moulded thermo-plastic, self-extinguishing, UL 94 VO
EMC screen	stainless steel
Service life L ₁₀ (+ 40 °C)	40,000 h
Weight / Color	7.56 lb / RAL 7035 (Lt. Gray) RAL 9011 (Blk)
Noise level (EN ISO 3741)	64 dB (A)
Type of connection	spring-type terminal
Bearing type	ball bearing
Approvals	UL, cUL, CE, EAC
Power consumption	160 W
Width x height x depth	12.6 x 12.6 x 6.18 in

System of protection (EN 60529)	IP 55
System of protection (UL 50)	NEMA type 12 - fluted filter
Filter mat quality class	G 4
Unimpeded airflow	462 CFM
Airflow rate in combination (PF + PFA 60.000)	295 CFM
Filtration efficiency	91%
Part no. *	11866153055 (115 V, Lt. Gray)
Part no. Spare part filter mats (5 pieces)	18611600037
Part no. NEMA Type 3R/4 Rainhood * NEMA Type 4x	18182000019 (Lt. Gray) 18182000020 (SS)

PF 67000 EMC

- Airflow rate up to 560 CFM
- System of protection IP 55 NEMA type 12
- Cut-out dimensions: 292 x 292 mm



Rated voltage ± 10%	115 V, 230 V, 24 VDC
Design (housing and protection against accidental contact)	made of injection-moulded thermo-plastic, self-extinguishing, UL 94 VO
EMC screen	stainless steel
Service life L ₁₀ (+ 40 °C)	40,000 h
Weight / Color	8.16 lb / RAL 7035 (Lt. Gray) RAL 9011 (Blk)
Noise level (EN ISO 3741)	69 dB (A)
Type of connection	spring-type terminal
Bearing type	ball bearing
Approvals	UL, cUL, CE, EAC
Power consumption	195 W
Width x height x depth	12.6 x 12.6 x 6.18 in

System of protection (EN 60529)	IP 55
System of protection (UL 50)	NEMA type 12 - fluted filter
Filter mat quality class	G 4
Unimpeded airflow	560 CFM
Airflow rate in combination (PF + PFA 60.000)	368 CFM
Filtration efficiency	91%
Part no. *	11867153055 (115 V, Lt. Gray)
Part no. Spare part filter mats (5 pieces)	18611600037
Part no. NEMA Type 3R/4 Rainhood * NEMA Type 4x	18182000019 (Lt. Gray) 18182000020 (SS)

EXHAUST FILTERS

PFA 10000 EMC

- Snap fastener without screws
- Simple filter mat exchange
- With integrated foam seal to enclosure
- W x H x D: 4.29 x 4.29 x .90 in
- Cut-out dimensions: 93 x 93 mm
- Color: RAL 7035, Lt. Gray or RAL 9011 Black



Design (housing and protection against accidental contact)	made of injection-moulded thermoplastic, self-extinguishing, UL 94 VO
EMC screen	stainless steel
Approvals	UL, cUL, CE, EAC
System of protection (EN 60529 / UL 50)	NEMA type 12 - standard filter
Filter mat quality class	G 3
Part no.	11910001055 (Lt. Gray)
Part no. Spare filter mats (5 pieces)	18611600029
Part no. NEMA Type 3R/4 Rainhood * NEMA Type 4x	18182000010 (Lt. Gray) 18182000011 (SS)

*Consult factory for additional options

EXHAUST FILTERS

PFA 20000 EMC

- Snap fastener without screws
- Simple filter mat exchange
- With integrated foam seal to enclosure
- W x H x D: 5.71 x 5.71 x 1.22 in
- Cut-out dimensions: 126 x 126 mm
- Color: RAL 7035 (Lt. Gray)
RAL 9011 (Blk)



Design (housing and protection against accidental contact)	made of injection-moulded thermoplastic, self-extinguishing, UL 94 VO
EMC screen	stainless steel
Approvals	UL, cUL, CE, EAC
System of protection (EN 60529 / UL 50)	NEMA type 12 - fluted filter
Filter mat quality class	G 4
Part no.	11920003055 (Lt. Gray)
Part no. Spare filter mats (5 pieces)	18611600034
Part no. NEMA Type 3R/4 Rainhood * NEMA Type 4x	18182000010 (Lt. Gray) 18182000011 (SS)

PFA 30000 EMC

- Snap fastener without screws
- Simple filter mat exchange
- With integrated foam seal to enclosure
- W x H x D: 7.95 x 7.95 x 1.57 in
- Cut-out dimensions: 178 x 178 mm
- Color: RAL 7035 (Lt. Gray)
RAL 9011 (Blk)



Design (housing and protection against accidental contact)	made of injection-moulded thermoplastic, self-extinguishing, UL 94 VO
EMC screen	stainless steel
Approvals	UL, cUL, CE, EAC
System of protection (EN 60529 / UL 50)	NEMA type 12 - fluted filter
Filter mat quality class	G 4
Part no. *	11930003055 (Lt. Gray)
Part no. Spare filter mats (5 pieces)	18611600035
Part no. NEMA Type 3R/4 Rainhood * NEMA Type 4x	18182000013 (Lt. Gray) 18182000014 (SS)

PFA 40000 EMC

- Snap fastener without screws
- Simple filter mat exchange
- With integrated foam seal to enclosure
- W x H x D: 9.92 x 9.92 x 1.65 in
- Cut-out dimensions: 224 x 224 mm
- Color: RAL 7035 (Lt. Gray)
RAL 9011 (Blk)



Design (housing and protection against accidental contact)	made of injection-moulded thermoplastic, self-extinguishing, UL 94 VO
EMC screen	stainless steel
Approvals	UL, cUL, CE, EAC
System of protection (EN 60529 / UL 50)	NEMA type 12 - fluted filter
Filter mat quality class	G 4
Part no. *	11940003055 (Lt. Gray)
Part no. Spare filter mats (5 pieces)	18611600036
Part no. NEMA Type 3R/4 Rainhood * NEMA Type 4x	18182000016 (Lt. Gray) 18182000017 (SS)

PFA 60000 EMC

- Snap fastener without screws
- Simple filter mat exchange
- With integrated foam seal to enclosure
- W x H x D: 12.6 x 12.6 x 1.8 in
- Cut-out dimensions: 292 x 292 mm
- Color: RAL 7035 (Lt. Gray)
RAL 9011 (Blk)



Design (housing and protection against accidental contact)	made of injection-moulded thermoplastic, self-extinguishing, UL 94 VO
EMC screen	stainless steel
Approvals	UL, cUL, CE, EAC
System of protection (EN 60529 / UL 50)	NEMA type 12 - fluted filter
Filter mat quality class	G 4
Part no. *	11960003055 (Lt. Gray)
Part no. Spare filter mats (5 pieces)	18611600037
Part no. NEMA Type 3R/4 Rainhood * NEMA Type 4x	18182000019 (Lt. Gray) 18182000020 (SS)

*Consult factory for additional options

SLIM LINE FILTERFANS®



PF 65000 SL

- Airflow rate up to 325 CFM
- System of protection IP 55, NEMA type 12
- UV-resistance
- Cut-out dimensions: 291 x 291 mm



Rated voltage ± 10%	115 - 230 V
Design (housing and protection against accidental contact)	made of injection-moulded thermo-plastic, self-extinguishing, UL 94 VO
Service life L ₁₀ (+ 40 °C)	40,000 h
Weight	7.27 lb
Color	RAL 7035 (Lt. Gray) RAL 9011 (Blk)
Noise level (EN ISO 3741)	52 dB (A)
Type of connection	terminal strip
Bearing type	ball bearing
Approvals	UL, cUL, CE, EAC
Power consumption	80 W
Width x height x depth	12.6 x 12.6 x 5.16 in

System of protection (EN 60529)	IP 55
System of protection (UL 50)	NEMA type 12 - fluted filter
Filter mat quality class	G 4
Unimpeded airflow	325 CFM
Airflow rate in combination (PF + PFA 60.000)	249 CFM
Filtration efficiency	91%
Part no. *	11675154055 (115 V, Lt. Gray)
Part no. *	11675154050 (115 V, Black)
Part no. Spare part filter mats (5 pieces)	18611600037
Part no. NEMA Type 3R/4 Rainhood * NEMA Type 4x	18182000019 (Lt. Gray) 18182000020 (SS)

PF 67000 SL

- Airflow rate up to 427 CFM
- System of protection IP 55, NEMA type 12
- UV-resistance
- Cut-out dimensions: 291 x 291 mm



Rated voltage ± 10%	115 V, 230 V, 460 V, 24 VDC
Design (housing and protection against accidental contact)	made of injection-moulded thermo-plastic, self-extinguishing, UL 94 VO
Service life L ₁₀ (+ 40 °C)	40,000 h
Weight	9.04 lb
Color	RAL 7035 (Lt. Gray) RAL 9011 (Blk)
Noise level (EN ISO 3741)	69 dB (A)
Type of connection	terminal strip
Bearing type	ball bearing
Approvals	UL, cUL, CE, EAC
Power consumption	165 W
Width x height x depth	12.6 x 12.6 x 5.27 in

System of protection (EN 60529)	IP 55
System of protection (UL 50)	NEMA type 12 - fluted filter
Filter mat quality class	G 4
Unimpeded airflow	427 CFM
Airflow rate in combination (PF + PFA 60.000)	342 CFM
Filtration efficiency	91%
Part no. *	11677154055 (115 V, Lt. Gray)
Part no. *	11677154050 (115 V, Black)
Part no. Spare part filter mats (5 pieces)	18611600037
Part no. NEMA Type 3R/4 Rainhood * NEMA Type 4x	18182000019 (Lt. Gray) 18182000020 (SS)

TOP MOUNT EXHAUST FILTERS



PTFA 60000

- Toolless mounting, patented quick fastening system
- System of protection IP 54, NEMA type 12
- W x D x H: 16.93 x 16.93 x 4.92 in
- Cut-out dimensions: 291 x 291 mm



Design (housing and protection against accidental contact)	sheet steel, cover powder-coated; snap-in housing made of injection-moulded thermoplastic (ABS-FR) self-extinguishing, UL 94 VO
Color	RAL 7035 (Lt. Gray)
Approvals	UL, cUL, CE, EAC
System of protection (EN 60529 / UL 50)	IP 54
Filter mat quality class	G 3
Part no. *	11786001055
Part no. Spare filter mats (20 pieces)	18611600038

*Consult factory for additional options

ROOF MOUNT FILTERFANS®



PTF 60500

- Airflow rate up to 206 CFM
- Toolless mounting, patented quick fastening system
- System of protection IP 54, NEMA type 12
- Cut-out dimensions: 291 x 291 mm



Rated voltage ± 10%	115 V 50 / 60 Hz
Design (housing and protection against accidental contact)	sheet steel, cover powder-coated; snap-in housing made of injection-moulded thermoplastic (ABS-FR) self-extinguishing, UL 94 VO
Service life L ₁₀ (+ 40 °C)	approx. 50,000 h
Weight	10.58 lb
Color	RAL 7035 (Lt. Gray)
Noise level (EN ISO 3741)	67 dB (A)
Type of connection	terminal strip
Bearing type	ball bearing
Approvals	UL, cUL, CE, EAC
Power consumption	4 x 24 W

Width x Depth x Height	16.93 x 16.93 x 4.92	
System of protection (EN 60529 / UL 50)	IP 54	
Filter mat quality class	G 3	
Unimpeded airflow	206 CFM	
Airflow rate in combination (PF + PFA 60.000)	142 CFM	
Filtration efficiency	81%	0%

Part no. *	11685151055
Part no. Spare part filter mats (20 pieces)	18611600038

PTF 60700

- Airflow rate up to 324 CFM
- Toolless mounting, patented quick fastening system
- System of protection IP 54, NEMA type 12
- Cut-out dimensions: 291 x 291 mm



Rated voltage ± 10%	115 V 50 / 60 Hz
Design (housing and protection against accidental contact)	sheet steel, cover powder-coated; snap-in housing made of injection-moulded thermoplastic (ABS-FR) self-extinguishing, UL 94 VO
Service life L ₁₀ (+ 40 °C)	approx. 40,000 h
Weight	9.04 lb
Color	RAL 7035 (Lt. Gray)
Noise level (EN ISO 3741)	69 dB (A)
Type of connection	terminal strip
Bearing type	ball bearing
Approvals	UL, cUL, CE, EAC
Power consumption	90 W

Width x Depth x Height	18.5 x 18.5 x 5.51 in	
System of protection (EN 60529 / UL 50)	IP 54	
Filter mat quality class	G 3	
Unimpeded airflow	324 CFM	
Airflow rate in combination (PF + PFA 60.000)	218 CFM	
Filtration efficiency	81%	

Part no. *	11687152055
Part no. Spare part filter mats (20 pieces)	18611600039

PTF 61000

- Airflow rate up to 441 CFM
- Toolless mounting, patented quick fastening system
- System of protection IP 54, NEMA type 12
- Cut-out dimensions: 291 x 291 mm

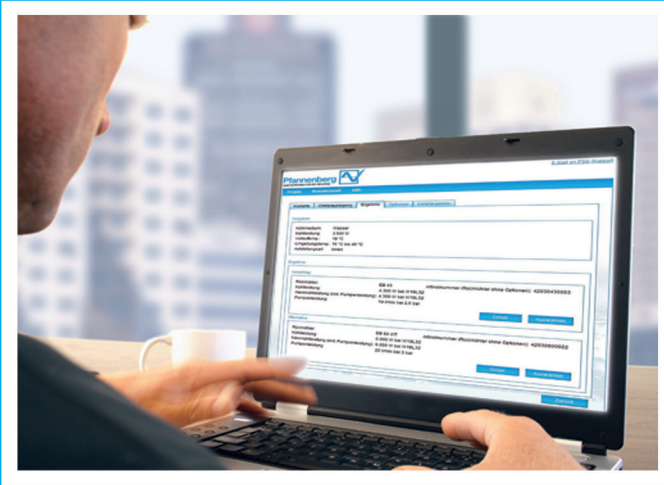


Rated voltage ± 10%	115 V 50 / 60 Hz
Design (housing and protection against accidental contact)	sheet steel, cover powder-coated; snap-in housing made of injection-moulded thermoplastic (ABS-FR) self-extinguishing, UL 94 VO
Service life L ₁₀ (+ 40 °C)	approx. 40,000 h
Weight	9.48 lb
Color	RAL 7035 (Lt. Gray)
Noise level (EN ISO 3741)	77 dB (A)
Type of connection	terminal strip
Bearing type	ball bearing
Approvals	UL, cUL, CE, EAC
Power consumption	160 W

Width x Depth x Height	18.5 x 18.5 x 5.51 in	
System of protection (EN 60529 / UL 50)	IP 54	
Filter mat quality class	G 3	
Unimpeded airflow	441 CFM	
Airflow rate in combination (PF + PFA 60.000)	294 CFM	
Filtration efficiency	81%	

Part no. *	11681152055
Part no. Spare part filter mats (20 pieces)	18611600039

*Consult factory for additional options



PSS PFANNENBERG SIZING SOFTWARE



Calculate the cooling requirements for your applications and find the optimal solution! Pfannenber's Sizing Software leads you to the result, step by step. You then receive a tailor-made recommendation for your application – and avoid costly over dimensioning and risky under dimensioning.

Download the PSS free of charge or calculate your requirements directly online at:

www.pfannenbergsusa.com/pss



Also available as an app for iOS and Android tablets. Look for "PSS"

Pfannenber Inc.

68 Ward Road
Lancaster, NY 14086
Phone: 716-685-6866
Fax: 716-681-1521
www.pfannenbergsusa.com
www.filterfanusa.com

Edition 12.2

Deliveries are made on the basis of the General Terms and Services of the ZVEI. Subject to technical amendments and misprints.

Authorized Reseller and/or Representative

