

# Rittal – The System.

Faster – better – everywhere.

► Protection  
for the Industry  
that Powers  
the Planet



ENCLOSURES

POWER DISTRIBUTION

CLIMATE CONTROL

IT INFRASTRUCTURE

SOFTWARE & SERVICES



# Take control.

Working on a rig is an adventure in survival, both physically and economically. With oil and gas prices down, it's especially important to look at every detail in your facility for efficiency. Keeping your staff safe and your equipment protected are two sure ways to ensure profitability.

Rittal enclosures are highly engineered products tailored to meet rapidly evolving applications, promote innovations, and reduce costs. The unmatched modularity and buying capabilities of our freestanding enclosures enhance the possibilities of electrical and machine design.

Rittal's robust portfolio of oil and gas enclosures include the strength and durability needed for today's oil and gas applications. Features like 304 or 316 stainless steel construction, foamed-in-place gaskets, four-point latching systems and a large assortment of mounting accessories give Rittal products the combination of design, security, and durability crucial for today's demands.

ENCLOSURES

POWER DISTRIBUTION

CLIMATE CONTROL



IT INFRASTRUCTURE

SOFTWARE & SERVICES





ENCLOSURES

POWER DISTRIBUTION

CLIMATE CONTROL



# Durability Meets Design

## 316 Stainless Steel TS 8 Enclosure

Rittal is proud to offer the latest addition to their world recognized enclosure portfolio: the 316 Stainless Steel TS 8. Based on the original highly acclaimed TS 8 enclosure series, this rugged stainless steel platform is the ideal freestanding solution for harsh environments.

This UL Type 4X modular enclosure affords many advantages over traditional unibody designs including expandability, lower weight (less transportation costs), more mounting space, and better workability (less labor costs). Whether housing drives, flow monitoring systems, or critical electrical components, the 316 Stainless Steel TS 8 maintains a clean, consistent environment in extreme locations.

The 316 Stainless Steel TS 8 features and benefits include:

- 30 percent more available mounting space than traditional unibody enclosures of equal dimensions
- Four-point latching system and continuous foamed-in-place gasket that provide a water and dust proof environmental seal
- Padlock-able handle that provides both easy access and security
- Spring-loaded, quick release hinges
- Full functionality and expandability of the TS enclosure series
- Large assortment of accessories for 3-D mounting of components on all internal surfaces
- Internally removable floor panel that simplifies conduit and wiring installation



IT INFRASTRUCTURE

SOFTWARE & SERVICES

# Technology that Endures

50 years ago we designed the first standard enclosure. Today we offer a full line of industrial enclosures that protect your process controls, instruments and electrical systems from heat, cold, rain, chemicals, salt spray and vibration. Plus, these standardized products are available around the world making Rittal the most accessible supplier of enclosures on the planet.



## Rittal helps drive the Houston Ship Channel, Houston, Texas

*The Port of Houston's location near the Texas oil fields, led to the development of petrochemical refineries along the Houston Ship Channel making it the largest petrochemical manufacturing area in the world.*

*A global chemical company chose Rittal to upgrade all of its systems in Houston and worldwide. The reason was simple: Rittal's enclosures safely and efficiently protect electronic equipment and control and processing systems in the harshest environments.*



## WM Wallmount Enclosure

Rittal's WM stainless steel wallmount enclosure protects critical equipment under the most demanding conditions.

Its one-piece, space-saving design makes the WM series easy to install and maintain. Flush surface installations are made simple thanks to an exterior rear wall that features blind nuts for mounting.

- Durable welded construction, available in either 304 or 316 stainless steel, provides environmental protection for installed components and equipment
- Secure stainless steel locking system and foamed-in-place door gasket provide a water and dust proof environmental seal
- Sealed blind nuts on the exterior rear wall for easy mounting
- Tested and certified to IP66 and UL Type 4X requirements
- Galvanized mounting plate is included as standard with enclosure



## JB Hinge Cover Junction Box

Small but strong, Rittal's JB Hinge Cover Junction Box features a multi-fold single-piece body construction for outstanding strength and stability with fewer welds. Available in 304 or 316 stainless steel, this modern design maximizes a smaller space to safely house more components.

The JB series features a quarter turn stainless steel latch with a screwdriver insert. A significant upgrade over the common clamp cover, the quarter turn latch eliminates the risk of user error involved in having to secure multiple screws or clamps.

- One piece enclosure body
- Left hand 180° hinge door
- Foamed-in-place gasket provides a water and dust proof environmental seal
- Sealed blind nuts on the exterior rear wall for easy mounting
- UL Type 4X
- Galvanized mounting plate available as an accessory





IT INFRASTRUCTURE

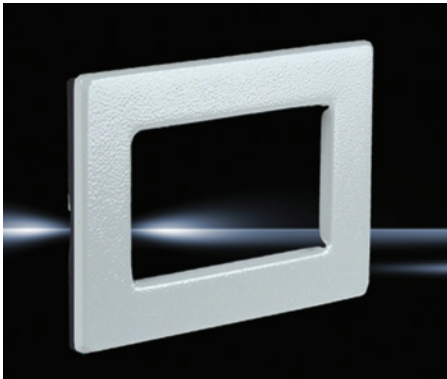
SOFTWARE & SERVICES





## Canada Makes the Switch to Rittal

A Canadian-based manufacturer of MPFM (Multiphase Flow Meter) selected Rittal's wallmount enclosure for a major project. Features like a superior water seal, a simpler, more protective hinge design and a weather strip that does not peel off when temperatures drop made Rittal the right choice.



## Window Kit

Rittal window kits can be installed in Rittal enclosures of suitable size. Window kits include all necessary hardware. Oil-resistant, foamed-in-place gaskets ensure a tight seal around the entire window and enclosure opening.

- Protection rating complies with NEMA 12, 3R, 4X
- 14 ga stainless steel



## Ex e Increased Safety Enclosure

Designed specifically for extreme conditions like those found in the oil and gas industry, Rittal's Ex stainless steel enclosures are certified for Ex e (increased safety) protection and are ATEX and IEC approved. The Ex e line can provide significant savings over similar sized cast aluminum or stainless steel Ex d enclosures. Plus, patented foamed-in-place silicone gasket technology offers a superior seal and reliable protection for applications in high-moisture environments or where chemicals may come in to play.

- Available with screw or hinge covers
- Right-hand hinge cover features quarter-turn latches with double-bit inserts
- Included mounting panel is zinc-plated carbon steel to provide instant grounding
- Protection ratings IP 66 to IEC 60 529
- Certificates:

–Enclosure with cover:

PTB 03 ATEX 1013U  
IEC Ex PTB 09.0033U

–Enclosure with door:

PTB 02 ATEX 1082U  
IEC Ex PTB 09.0035U

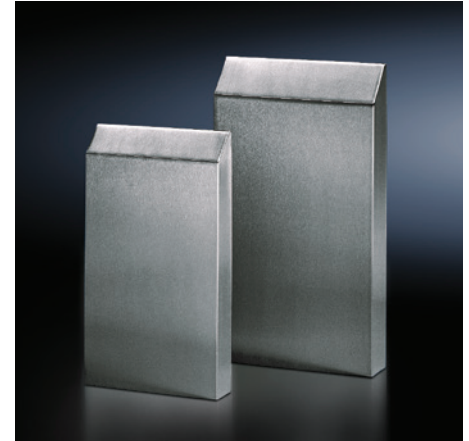


## TopTherm Filter Fans

For energy-efficient operation of the filter fans, we recommend using the enclosure internal thermostat, the speed control or the digital enclosure internal temperature display and thermostat.

- Complete unit ready to install, including filter mat
- NEMA 12, 3R/4, or 4X

Fan Rated 3R when combined with appropriate hood



## Hose-Proof Hood

Used for a higher protection category of TopTherm Filter Fans. External, silicone seal provides easy cleaning.

- Stainless steel, silicone
- Protection ratings: NEMA Type 1, 12, 3, 3R, 4, 4X





## SE 8 Freestanding Enclosure

Rittal understands that the components inside an enclosure are absolutely mission critical whether at an extraction site, a refinery, or anywhere along the pipeline. That's why the 304 stainless steel SE 8 employs one-piece construction, an enclosed basic frame, and one-of-a-kind closure and gasket technologies that work in conjunction to provide a contaminant proof environmental seal. Since the SE 8 has fewer areas for dirt and moisture to collect, cleaning is easy which reduces the risk of outside elements coming in contact with internal components when the enclosure is opened.

As with the external design, no detail was spared in the development of the sophisticated two-level approach to internal mounting and cable entry options, which makes it easy for engineers to get the most out of every inch of the SE 8.

Staying true to The System, the SE 8 is fully compatible with the vast array of TS series modular accessories. Selecting the SE 8 can reduce planning costs by simplifying the specification of accessories including climate control products across the full spectrum of an oil and gas operation.

Other features include:

- Single door (Type 4X/IP66) and double door (Type 12/IP55) configurations available
- Rear wall is screw fastened into place for easy access and cable entry using the integrated base frame
- Automatic potential equalization
- Interchangeable door hinge can be mounted on either right or left side of enclosure
- Zinc-plated mounting panel



IT INFRASTRUCTURE

SOFTWARE & SERVICES



ENCLOSURES

POWER DISTRIBUTION

CLIMATE CONTROL



# Built Rugged for the Rig, Engineered for the Control Room

Rittal's systematic approach to enclosures, power distribution, climate control and IT infrastructure make it the only logical enclosure partner for expansive, diverse oil and gas applications. Whether it's a large bayed configuration housing distributed control systems, single- or double-door enclosures protecting low- or high-voltage control panels or even junction boxes for small lighting installations, Rittal's products are more than just containers.

The vast offerings within the Rittal System not only interact seamlessly with each other, but also with the critical components they protect; highly engineered climate control, accessory options and power distribution capabilities keep drives, switchgear and instrumentation functioning efficiently while preserving their integrity in any environment the oil and gas industry demands.

Consistent design and production allows Rittal to serve needs as demand stretches beyond a single location or even a single country. Thanks to a global network of 11 production sites on three continents, more than 10,000 employees, 64 subsidiaries and 1,000-plus service engineers worldwide, Rittal can respond to operations not only in North America, but across the globe better than anyone else.

That's why Rittal stands by its claim — Faster - better - everywhere.



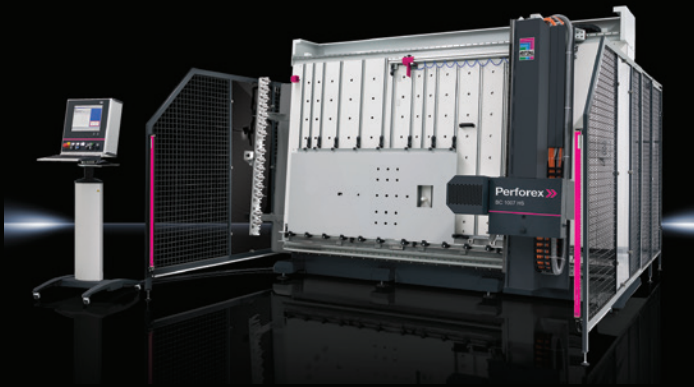
# Rittal – The System.

Faster – better – everywhere.

- Enclosures
- Power Distribution
- Climate Control
- IT Infrastructure
- Software & Service



Opportunities abound inside Rittal's Oil and Gas Competency Center, where you'll find compelling interactive video kiosks, information panels, and hands on exhibits that demonstrate the important role of enclosure durability and integrity.



While you are at the Oil and Gas Competency Center, you can discover the Perforex machining unit which was designed to automatically create holes, threads, and milled surfaces on all standard materials including steel, stainless steel, aluminum and copper.

## Rittal Oil and Gas Competency Center

11717 Windfern Road  
Suite 300  
Houston, TX 77064  
Toll-free: 800-477-4000  
Online: [www.rittalcc.com](http://www.rittalcc.com)

## Rittal Corporation

Woodfield Corporate Center • 425 N. Martingale Road, Suite 400 • Schaumburg, IL • USA  
Phone: 937-399-0500 • Toll-free: 800-477-4000  
Email: [rittal@rittal.us](mailto:rittal@rittal.us) • Online: [www.rittal.us](http://www.rittal.us)

ENCLOSURES

POWER DISTRIBUTION

CLIMATE CONTROL

IT INFRASTRUCTURE

SOFTWARE & SERVICES

FRIEDHELM LOH GROUP

